

12h10 - 13h40 **Session coronaire : de la pratique à la polémique**

Modérateur : T. Cuisset (Marseille, FR) - Panel : J.-P. Collet (Paris, FR) et P. Motreff (Clermont-Ferrand, FR)
Gestion des questions : N. Dumonteil (Toulouse, FR)

En pratique :

Le POT sous utilisé ? *O. Darremont (Bordeaux, FR)*
Accès difficile aux branches *N. Boudou (Bordeaux, FR)*
Rotablator et Shockwave, comment choisir ? *G. Souteyrand (Clermont-Ferrand, FR)*
Matériel minimum pour aborder une CTO antérograde *T. Hovasse (Massy, FR)*

Matériel minimum pour aborder une CTO antérograde.

Dr Thomas Hovasse et l'équipe de l'ICPS.

Problématique

Nouveau matériel:

- Coût? Stockage?
- Vais-je l'utiliser souvent?
- Est-il indispensable?

PTCA guidewires crosstable

Sion Blue
Sion
Sion black
Fielder XT-A
Fielder XT-R
Gaia First
Gaia Second
Gaia Third
Gaia NEXT 1
Gaia NEXT 2
Gaia NEXT 3
Gladius EX
Gladius Mongo
Gladius Mongo ES
Suoh 03
HI-TORQUE Pilot 200
Fielder FC
ULTIMATEbros 3
CONFIANZA PRO
CONFIANZA PRO 12
MIRACLEbros 3, 4.5, 6, 12
Samurai
Samurai RC
Marvel
Judo 1, Judo 2, Judo 3
Fighter
Hornet 10
Hotner 14
Grand Slam
Sion Blue ES
RG3
R350
Runthrough NS Extra floppy
Runthrough NS
HI-TORQUE
BMW UII
Minamo

Microcatheters crosstable

	CONSTRUCTION
Corsair Pro	SHINKA shaft Spiral coil 10 wire
Corsair Pro XS	Stainless spiral coil 14 braided wire
Caravel	Braided shaft
Finecross MG	Braided stainless steel shaft
Turnpike	5 layer composite shaft
Turnpike LP	5 layer composite shaft
Turnpike Spiral	5 layer composite shaft
Turnpike Gold	5 layer composite shaft
Supercross (straight tip)	Braided shaft
Supercross (angled tip)	Dual coil Platinum/tungsten
Tornus	Stainless steel coil 8 wires
Mamba	Tapered coil 3 zones
Mamba Flex	Tapered coil 5 zones
Nhancer Pro X	Braided shaft
Teleport	HYBRACOIL
Teleport Control	HYBRACOIL
MicroCross 14	Braided shaft Variable-pitch
M-cath	Hybrid braided shaft

Double lumen, special catheters crosstable

	CONSTRUCTION	TIP ENTRY PROFILE
Sasuke	Double lumen oval MC Double stainless steel core	1.5 Fr (0.50 mm)
FineDuo	Double lumen round MC	1.3 Fr (0.43 mm)
Crusade	Double lumen round MC	1.3 Fr (0.43 mm)
Twin-Pass Torque	Double lumen round MC Stainless steel braided shaft	2.1 Fr (0.71 mm)
Twin-Pass	Double lumen oval MC Stainless steel rod	2.0 Fr (0.66 mm)
Recross	Double lumen, double OTW oval MC, braided shaft	1.5 Fr (0.50 mm)
Nhancer RX	Double lumen oval MC Braided shaft	1.5 Fr (0.50 mm)
Venture	Deflectable 90° tip MC RX and OTW	2.27 Fr (0.75 mm)
Swiftninja	Deflectable tip 180° MC	2.4 Fr 0.79 mm)

Guide Extension catheters crosstable

	CONSTRUCTION	SIZES
Guideliner V3	Coiled stainless braid	5 Fr 5.5 Fr 6 Fr 7 Fr 8 Fr
Trapliner	Coiled stainless braid Trapping balloon 3.15x11	6 Fr 7 Fr 8 Fr
Guidezilla II	Stainless steel hypotube Braided	6 Fr 7 Fr 8 Fr
Guidion	Braided distal tubing	5 Fr 6 Fr 7 Fr 8 Fr
Telescope	Coil-reinforced distal segment TRUEFLEX soft tip	6 Fr 7 Fr

Low-profile, special balloons crosstable

	TIP ENTRY PROFILE	CROSSING PROFILE
NIC Nano Hydro	0.016"	0.0195" (0.495 mm)
NIC 1.1. Hydro	0.016"	0.0205" (0.52 mm)
Across CTO RX	0.016"	0.021" (0.53 mm)
Across CTO ST	0.016"	0.021" (0.53 mm)
Across CTO OTW	0.016"	0.021" (0.53 mm)
Across CTO Flexy	0.016"	0.021" (0.53 mm)
Blimp	N/A	0.0195" 0.495 mm)
Sapphire II PRO 1.0-1.5	0.016"	0.022" (0.55 mm)
Sapphire 3	0.0159"	0.0208"
Ikazuchi ZERO 1.0	0.016"	0.023" (0.58 mm)
Ryurei 1.0-1.5	0.016"	0.023" (0.58 mm)
Emerge 1.2	0.017"	0.026" (0.67 mm)
Mini Trek 1.2	0.018"	0.026" (0.66 mm)
OPN NC	0.016"	0.028" (0.71 mm)

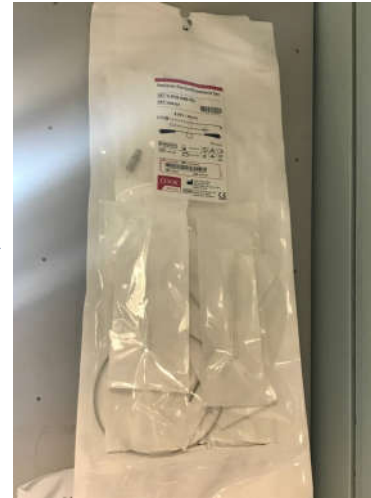
Solution

Sélection intelligente:

- Possibilité de faire la plupart des CTO.
- Stock « raisonnable » et CTO Box.
- Roulement pour éviter péremption.

Utilisation pour angioplastie non CTO

Gestion des complications



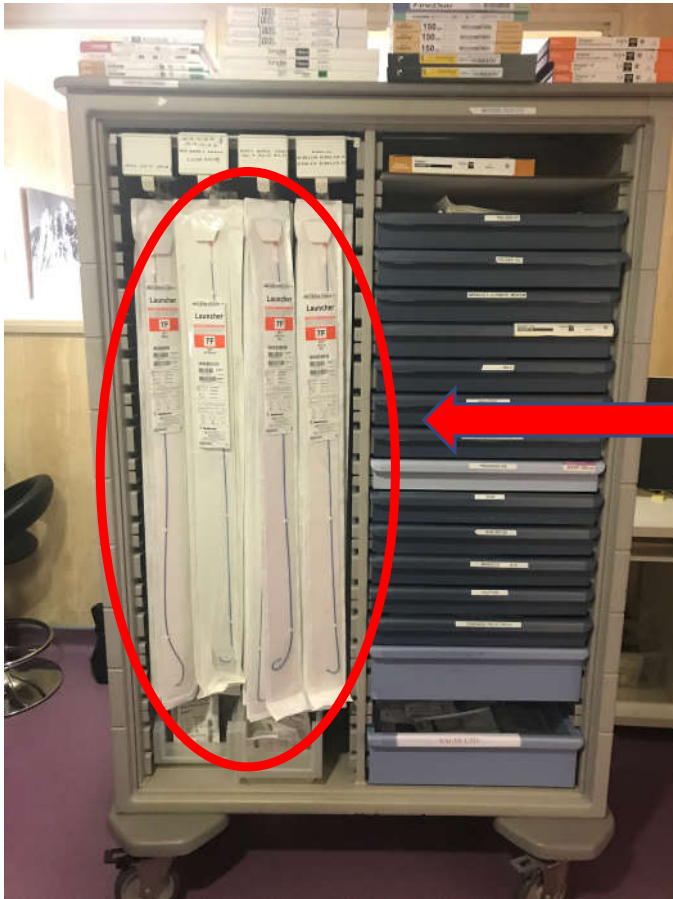
Contrôle ACT

Contrôle Iode

Contrôle Rx



Guiding Catheter



- IMPORTANCE DU SUPPORT

PASSIF(>6F)

- QUI PERMET D'UTILISER LES

TECHNIQUES ADAPTÉES À LA CTO

- Double microcatheter et trapping

Guiding 7F

EBU 3,5 – 4 (3,75)

AL 1 (0,75), 3DR

Utilisation pour angioplastie non CTO:

- TC avec 2 gros vaisseaux ou trifurcation.
- IDM avec grosse charge thrombotique.

Microcatheter & CTO

Indispensable

Permet support, contrôle, franchissement, échange de guide, micro-injection.

Pour antérograde 135 cm

Passer à 150 cm si développement rétrograde

Microcatheters crosstable

	CONSTRUCTION
Corsair Pro	SHINKA shaft Spiral coil 10 wire
Corsair Pro XS	Stainless spiral coil 14 braided wire
Caravel	Braided shaft
Finecross MG	Braided stainless steel shaft
Turnpike	5 layer composite shaft
Turnpike LP	5 layer composite shaft
Turnpike spiral	5 layer composite shaft
Turnpike Gold	5 layer composite shaft
Supercross (straight tip)	Braided shaft
Supercross (angled tip)	Dual coil Platinum/tungsten
Tornus	Stainless steel coil 8 wires
Mamba	Tapered coil 3 zones
Mamba Flex	Tapered coil 5 zones
Nhancer Pro X	Braided shaft
Teleport	HYBRACOIL
Teleport Control	HYBRACOIL
MicroCross 14	Braided shaft Variable-pitch
M-cath	Hybrid braided shaft

Microcatheter & non CTO

Indispensable

Permet support, contrôle, franchissement de lésions complexe, tortueuses, side branches

Echange de guide (Rota, extra-support)

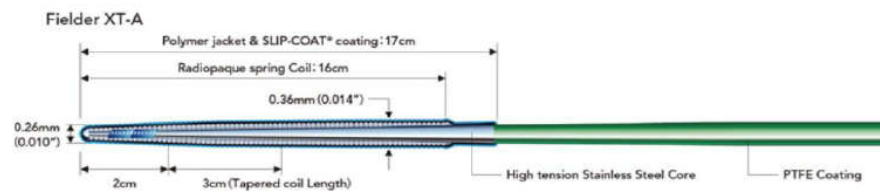
Injections distales (IDM, dissection coronaires)

Microcatheters crosstable

	CONSTRUCTION
Corsair Pro	SHINKA shaft Spiral coil 10 wire
Corsair Pro XS	Stainless spiral coil 14 braided wire
Caravel	Braided shaft
Finecross MG	Braided stainless steel shaft
Turnpike	5 layer composite shaft
Turnpike LP	5 layer composite shaft
Turnpike spiral	5 layer composite shaft
Turnpike Gold	5 layer composite shaft
Supercross (straight tip)	Braided shaft
Supercross (angled tip)	Dual coil Platinum/tungsten
Tornus	Stainless steel coil 8 wires
Mamba	Tapered coil 3 zones
Mamba Flex	Tapered coil 5 zones
Nhancer Pro X	Braided shaft
Teleport	HYBRACOIL
Teleport Control	HYBRACOIL
MicroCross 14	Braided shaft Variable-pitch
M-cath	Hybrid braided shaft

Guides & CTO

Guide de tracking des micro-chenaux



CONSTRUCTION: PTCA guide wire 0.014", 0.010" tapered tip (2 cm), (tapering part -3 cm), (SION TECC core) - Stainless steel core + Composite core (ACT ONE rope coil, round core, twist wire), 16 cm spring coil

TIP LOAD: 1.0 g (Fielder XT 0.8 g)

TORQUE: 1:1 Torque

COATING: 17 cm hydrophobic coating (SLIP-COAT), 17 cm polymer jacket

Non CTO

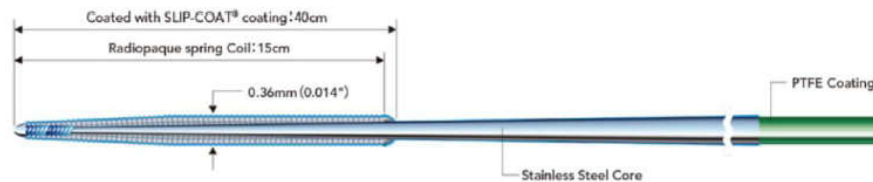
- Lésions complexes
- Dissection
- Passage maille stent

Fielder XT, Fighter

Guides & CTO

Guide dirigeable/redirection

GAIA Family (ASAHI INTECC)



CONSTRUCTION: PTCA guide wire 0.014", (SION TECC core) - Stainless steel core + Composite core (ACT ONE rope coil, round core, twist wire), 15 cm spring coil, tapered tip. GAIA micro cone tip, 1 mm preshaped

3 models with tapering tip: GAIA FIRST to 0.010", GAIA SECOND to 0.011", GAIA THIRD to 0.012"

TIP LOAD: Gaia first 1.7 g, gaia second 3.5g, Gaia third 4.5g (first and second without stump, third for hard plaque)

TORQUE: 1:1

COATING: 40 cm hydrophilic coating, uncoated microcone tip.

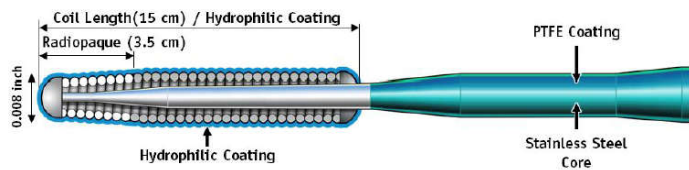
Non CTO
•Lésions calcifiées

Gaia 2,3, Judo 1,3,6

Guides & CTO

Guide pénétration

SENTAI HORNET Family (BOSTON SCIENTIFIC)



CONSTRUCTION: PTCA guide wire 0.014", tapered tip 0.008", Compound-Taper Stainless Steel Core - core to tip design, 15 cm spring coil

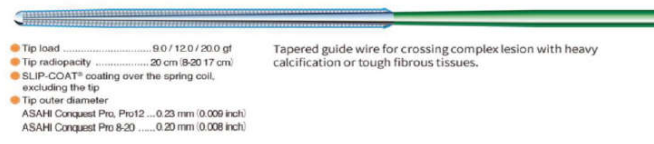
TIP LOAD: **HORNET 10** - 10 g, **HORNET 14** - 14 g

TORQUE: 1:1

COATING: full length hydrophilic coating coil length 15 cm

RADIOPAQUE SEGMENT: 3.5 cm

CONFIANZA PRO/Conquest pro (ASAHI INTECC)



CONSTRUCTION: PTCA guide wire 0.014", Conquest Pro and Pro 12 tapered tip 0.009", Conquest Pro 8-20 tapered to 0.008", stainless steel core, core to tip design, 20 cm spring coil (8-20 spring coil 17 cm)

CONFIANZA PRO, CONFIANZA PRO 12, CONFIANZA PRO 8-20

TIP LOAD: 9.0 g, 12.0 g and 20 g.

TORQUE: 1:1

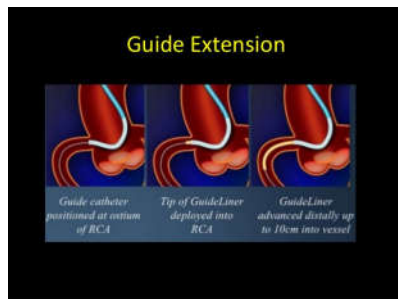
COATING: 20 hydrophilic coating (SLIP-COAT) on spring coil, non coated distal tip

Non CTO
 •rien

Hornet, Confianza, Pro, Miracle,

Ballon & CTO

Indispensable
 Meilleur profil que les microcathéter
 Ballon de 1 et 0,8 mm.



& utilisable en angioplastie classique bien sur...

Low-profile, special balloons crosstable

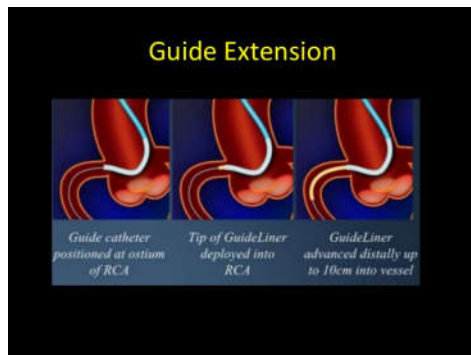
	TIP ENTRY PROFILE	CROSSING PROFILE
NIC Nano Hydro	0.016"	0.0195" (0.495 mm)
NIC 1.1. Hydro	0.016"	0.0205" (0.52 mm)
Across CTO RX	0.016"	0.021" (0.53 mm)
Across CTO ST	0.016"	0.021" (0.53 mm)
Across CTO OTW	0.016"	0.021" (0.53 mm)
Across CTO Flexy	0.016"	0.021" (0.53 mm)
Blimp	N/A	0.0195" (0.495 mm)
Sapphire II PRO 1.0-1.5	0.016"	0.022" (0.55 mm)
Sapphire 3	0.0159"	0.0208"
Ikazuchi ZERO 1.0	0.016"	0.023" (0.58 mm)
Ryurei 1.0-1.5	0.016"	0.023" (0.58 mm)
Emerge 1.2	0.017"	0.026" (0.67 mm)
Mini Trek 1.2	0.018"	0.026" (0.66 mm)
OPN NC	0.016"	0.028" (0.71 mm)

Extensions de catheter & CTO

Presque indispensable...

Augmente le support du micro cathéter & ballon

+++ si début de la rétrograde (Reverse Cart & extern)



Guide Extension catheters crosstable

	CONSTRUCTION	SIZES
Guideliner V3	Coiled stainless braid	5 Fr 5.5 Fr 6 Fr 7 Fr 8 Fr
Trapliner	Coiled stainless braid Trapping balloon 3.15x11	6 Fr 7 Fr 8 Fr
Guidezilla II	Stainless steel hypotube Braided	6 Fr 7 Fr 8 Fr
Guidion	Braided distal tubing	5 Fr 6 Fr 7 Fr 8 Fr
Telescope	Coil-reinforced distal segment TRUEFLEX soft tip	6 Fr 7 Fr

Extensions de catheter & non CTO

Indispensable...

Augmente le support ballon

« Dépose de stent »

Bifurcations (franchissement)

Attention aux injections & réglages débit

Guide Extension catheters crosstable

	CONSTRUCTION	SIZES
Guideliner V3	Coiled stainless braid	5 Fr 5.5 Fr 6 Fr 7 Fr 8 Fr
Trapliner	Coiled stainless braid Trapping balloon 3.15x11	6 Fr 7 Fr 8 Fr
Guidezilla II	Stainless steel hypotube Braided	6 Fr 7 Fr 8 Fr
Guidion	Braided distal tubing	5 Fr 6 Fr 7 Fr 8 Fr
Telescope	Coil-reinforced distal segment TRUEFLEX soft tip	6 Fr 7 Fr

Micro cathéter double lumière & CTO

Presque indispensable...

Redirection si passage side-branch

Traitement bifurcation dans ou en aval de la CTO,
protection des sides branches.

8 Protection of Side Branch



Micro cathéter double lumière & non CTO

Presque indispensable...

Passage branche fille, tortuosité, maille.

Dissection coronaire

- Retrouver la vraie lumière
- Fenestration

Conclusion

CTO box pas si grande pour débiter antérograde.

Utilisation pour 90% de ce matériel dans l'angioplastie de tous les jours (et nuit).